



FULL SIZE CHEVY®

FULL SIZE CHEVROLET



Full Size Chevy® Index

A

Air Vent Assemblies: FS2

B

Bumper & Brackets: FS6

Battery Trays, Clamps, Bolts: FS1

C

Cowl Side Panel: FS13

Convertible Top Components: FS15

D

Door Latches: FS2

Door Flipper: FS5

Door Shell/Skin: FS10

Door Panel Trim: FS10

Door Release: FS15

Door Jamb Panel: FS15

Deck Filler: FS13

F

Floor Panel

Complete Floor Pan: FS3

Floor Panel & Braces: FS6

Floor Panel Plate: FS9

Floor Seat Support: FS8

Floor Under Seat Support: FS8

Floor Reinforcement & Body Mount Plate: FS8

Front Valances: FS1

Fuel Senders: FS1

Fender:

Inner Fender: FS4

Fender Brackets: FS4

Fender Splash Shield: FS5

Firewall: FS12

G

Gas Tank: FS7

Grille

Grille Bar Support Brackets: FS13

Grille Upper Plate: FS13

H

Headlamp

Bezels: FS2

Buckets & Rims: FS2

Hood: FS4

Hood Hinges & Latches: FS2

Hand Brake Assy: FS7

M

Molding

Door Molding: FS11

Fender Molding: FS11

Windshield Molding: FS11

Top Dash: FS11

Quarter Panel Molding: FS11

Pillar Molding: FS11

P

Parking Brake Assemblies: FS2

Parking Lamp: FS5

Q

Quarter Panel Inner: FS9

OE Quarter Panel: FS12

R

Radiator

Filler: FS7

Support: FS7

Splash Shield: FS12

Rocker Panel

Inner Rocker: FS9

Roof Panel: FS12

S

Scuff Plates: FS2

Spare Tire Whell: FS7

Seat

Seat Back Brace: FS15

Seat Shell: FS5

Seat Retainer Pocket: FS15

T

Trunk Lid: FS4

Trunk Latch Bracket: FS15

Trunk Floor: FS10

Tail Panel Patch: FS14

Transmission Plate Cover: FS14

W

Wheelhouse: FS14



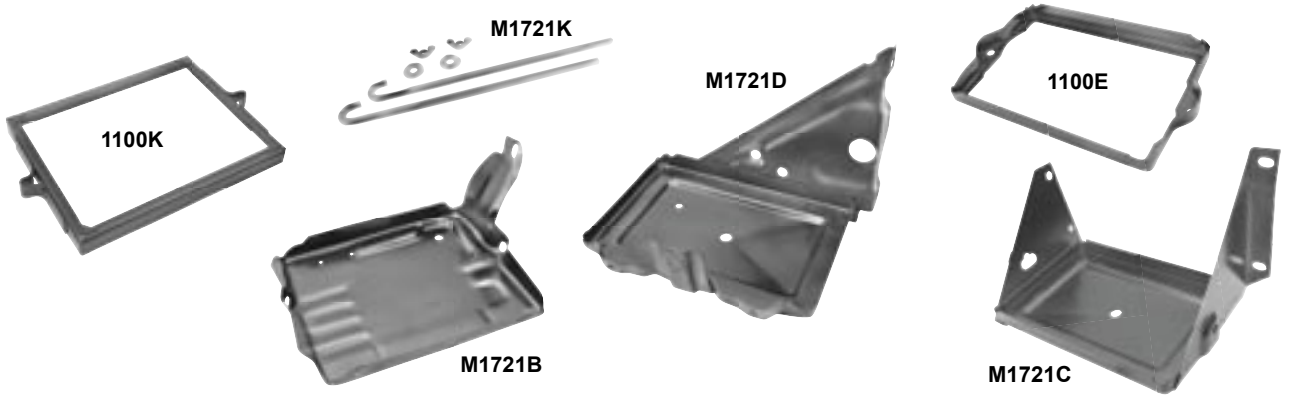
FULL SIZE CHEVY®

Front Valances



4002	1955	Front Valance Assembly, 3 pieces	MSRP \$182.00 ea
4000	1956	Front Valance Assembly	MSRP \$182.00 ea
4001	1957	Front Valance Assembly	MSRP \$190.00 ea

Battery Trays & Clamps



1100K	1940-54	Battery Clamp	MSRP \$19.00 ea
M1721B	1949-54	Battery Tray	MSRP \$37.00 ea
M1721K	1949-58	Battery Clamp Bolts	MSRP \$7.00 pr
M1721C	1955-56	Battery Tray	MSRP \$29.00 ea
1100E	1955-56	Battery Clamp	MSRP \$14.00 ea
M1721D	1957	Battery Tray	MSRP \$29.00 ea

Fuel Senders



T36	1931-54	Fuel Sending Unit	MSRP \$50.00 ea
T37	1955-57	Fuel Sending Unit, 5/16"	MSRP \$67.00 ea
T37A	1955-57	Fuel Sending Unit, 3/8"	MSRP \$49.00 ea

****Wholesale Only** MSRP not including Taxes, Shipping and Handling. MSRP are subject to change without notice**

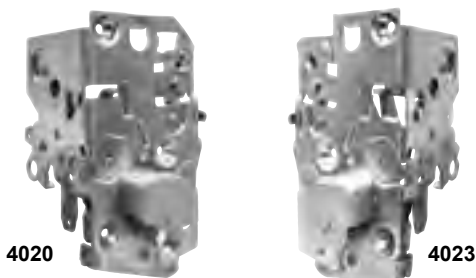
Headlamp Bezels



M1718A

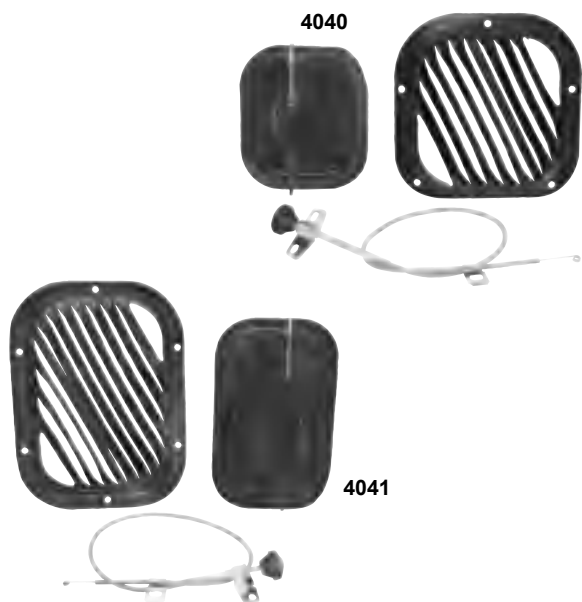
M1718A	1949-52	Headlamp Bezels	MSRP \$35.00 pr
GL-4300	1955	Headlamp Bezel pr	MSRP \$140.00 pr
GL-4300A	1955	Headlamp Rims	MSRP \$34.00 pr
GL-4300B	1956	Headlamp Bucket pr	MSRP \$130.00 pr

Door Latches



4020	1955	Door Latch, RH	MSRP \$114.00 ea
4021	1955	Door Latch, LH	
4022	1956-57	Door Latch, RH	MSRP \$114.00 ea
4023	1956-57	Door Latch, LH	

Air Vent Assemblies



4040	1955-56	Air Vent Assembly, RH	MSRP \$109.00 ea
4041	1955-56	Air Vent Assembly, LH	

Hood Hinges



4011

4010	1955-56	Hood Hinge, RH	MSRP \$80.00 ea
4011	1955-56	Hood Hinge, LH	MSRP \$80.00 ea
4014	1957	Hood Hinge, RH	MSRP \$152.00 ea
4015	1957	Hood Hinge, LH	MSRP \$152.00 ea

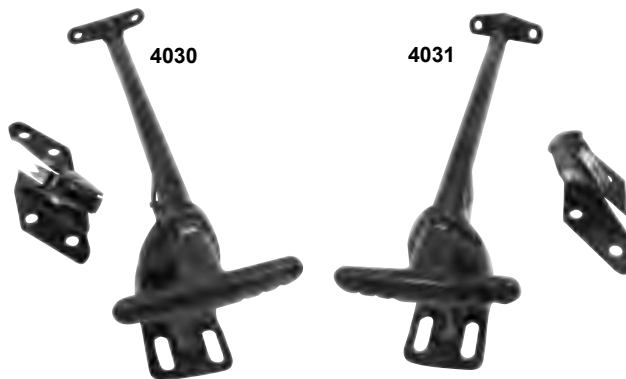
Hood Latches



4012

4012	1955	Hood Latch	MSRP \$94.00 ea
4012A	New 1956	Hood Latch	MSRP \$94.00 ea
4013	1957	Hood Latch	MSRP \$94.00 ea
GL-4013A	1957	Hood Catch Support	MSRP \$28.00 ea
GL-4013B	1957	Hood Latch Plate	MSRP \$12.00 ea

Parking Brake Assys.



4030	1955-56	Parking Brake Assembly	MSRP \$125.00 ea
4031	1957	Parking Brake Assembly	

Scuff Plates



M4000	New	1955-57	Scuff Plates for 2 door, 2 pcs.	MSRP \$75.00 pr
M4001	New	1955-57	Scuff Plates for 4 door, 4 pcs.	MSRP \$119.00 set

Wholesale Only MSRP not including Taxes, Shipping and Handling. MSRP are subject to change without notice



FULL SIZE CHEVY®

Complete Floor Panel

****Wholesale Only**** MSRP not including Taxes, Shipping and Handling. MSRP are subject to change without notice



GL-4550



GL-4551



GL-4550



GL-4551



GL-4552



GL-4552

GL-4550	1955-57	Complete Floor Panel w/braces & inner rocker H/T	MSRP \$999.00 ea
GL-4551	1955-57	Complete Floor Panel w/braces & inner rocker Convrt	MSRP \$999.00 ea
GL-4552	1955-57	Complete Floor Panel w/braces & inner rocker Sedan 2&4 doors	MSRP \$999.00 ea

Inner Fender



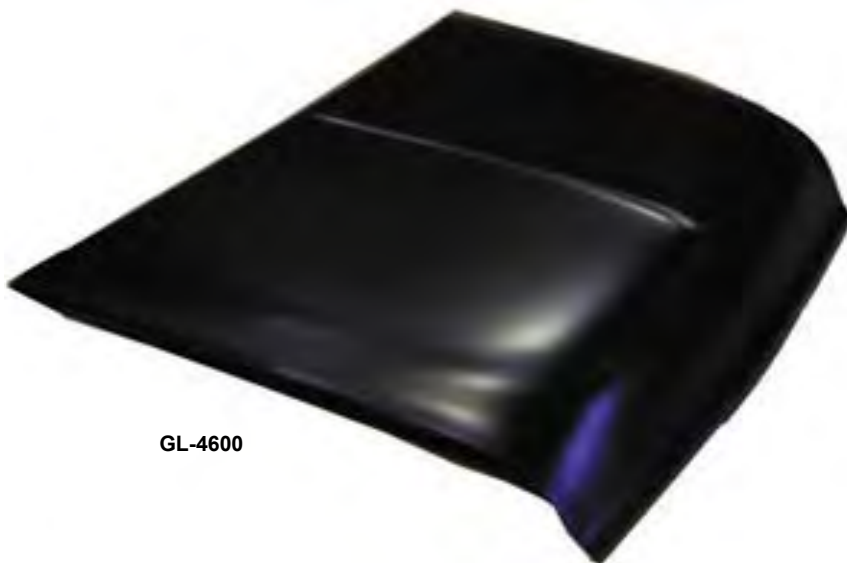
GL-4106/GL-4107



GL-4104/GL-4105

GL-4104	1955	Inner Fender RH	MSRP \$150.00 ea
GL-4105	1955	Inner Fender LH	MSRP \$150.00 ea
GL-4106	1957	Inner Fender RH	MSRP \$150.00 ea
GL-4107	1957	Inner Fender LH	MSRP \$150.00 ea

Hood



GL-4600

GL-4600	1955	Hood	MSRP \$580.00 ea
GL-4601	1957	Hood	MSRP \$580.00 ea

Fender Brackets



GL-4103/GL-4102

GL-4102	1955	F.Fender to Bumper Bracket RH	MSRP \$37.00 ea
GL-4103	1955	F.Fender to Bumper Bracket LH	MSRP \$37.00 ea

Trunk Lid



GL-4620

GL-4620	1955	Trunk Lid	MSRP \$530.00 ea
GL-4621	1956	Trunk Lid	MSRP \$530.00 ea
GL-4622	1957	Trunk Lid	MSRP \$530.00 ea

Wholesale Only MSRP not including Taxes, Shipping and Handling. MSRP are subject to change without notice

****Wholesale Only** MSRP not including Taxes, Shipping and Handling. MSRP are subject to change without notice**



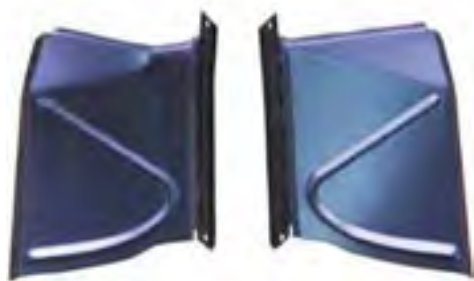
GL-4200/GL-4201



GL-4202/GL-4203

GL-4200	1957	Seat Shell Upper RH	MSRP \$35.00 ea
GL-4201	1957	Seat Shell Upper LH	MSRP \$35.00 ea
GL-4202	1957	Seat Shell Lower RH	MSRP \$55.00 ea
GL-4203	1957	Seat Shell Lower LH	MSRP \$55.00 ea

Seat Shell



GL-4100/GL-4101



GL-4108/GL-4109

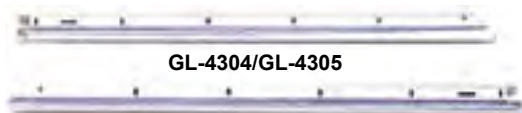
GL-4100	1955	Fender Inner Splash RH	MSRP \$39.00 ea
GL-4101	1955	Fender Inner Splash LH	MSRP \$39.00 ea
GL-4108	1957	Fender End Splash Shield RH	MSRP \$69.00 ea
GL-4109	1957	Fender End Splash Shield LH	MSRP \$69.00 ea

Fender Splash Shield



GL-4302/GL-4303

Polished Stainless !!



GL-4304/GL-4305

GL-4302	1955	Door Flipper RH	MSRP \$150.00 ea
GL-4303	1955	Door Flipper LH	MSRP \$150.00 ea
GL-4304	1956-57	Door Flipper RH	MSRP \$150.00 ea
GL-4305	1956-57	Door Flipper LH	MSRP \$150.00 ea

Door Flipper



GL-4301 1955 Parking Lamp pr MSRP \$150.00 pr

Parking Lamp

www.goldenleafautomotive.com

Floor Panel & Braces



GL-4553



GL-4555

GL-4553	1955	Front Floor Panel RH, Sedan	MSRP \$230.00 ea
GL-4554	1955	Front Floor Panel LH, Sedan	MSRP \$230.00 ea
GL-4555	1955	Front Floor Panel RH, Hardtop	MSRP \$230.00 ea
GL-4556	1955	Front Floor Panel LH, Hardtop	MSRP \$230.00 ea



GL-4502

GL-4502



GL-4503

GL-4506

GL-4507



GL-4504



GL-4521



GL-4505

GL-4501	1955-57	Floor Panel Brace at Cowl RH	MSRP \$45.00 ea
GL-4502	1955-57	Floor Panel Brace at Cowl LH	MSRP \$45.00 ea
GL-4503	1955-57	Floor Panel Brace Front Short RH=LH	MSRP \$35.00 ea
GL-4504	1955-57	Floor Panel Brace Front Long	MSRP \$95.00 ea
GL-4505	1955-57	Floor Panel Brace Rear Long	MSRP \$115.00 ea
GL-4506	1955-57	Floor Panel Brace Rear Short RH	MSRP \$30.00 ea
GL-4507	1955-57	Floor Panel Brace Rear Short LH	MSRP \$30.00 ea
GL-4521	1955-57	Floor Panel Longe Brace Conv	MSRP \$10.00 ea

Bumper & Brackets



GL-4000



GL-4002



GL-4001

GL-4000	1957	Front Bumper, 5pcs set	MSRP \$600.00 set
GL-4001	1957	Front Bumper Brackets, 10pcs set	MSRP \$240.00 set
GL-4002	1957	Front Bumper Bullet Metal Inserts w/hardware kits	MSRP \$30.00 set
GL-4000A	1957	Rear Bumper	MSRP \$280.00 ea
GL-4000B	1957	Rear Bumper Bracket	MSRP \$47.00 ea

Wholesale Only MSRP not including Taxes, Shipping and Handling. MSRP are subject to change without notice

****Wholesale Only** MSRP not including Taxes, Shipping and Handling. MSRP are subject to change without notice**



GL-4306	1955-57	Spare Tire Wheel	MSRP \$80.00 ea
---------	---------	------------------	------------------------

Spare Tire Wheel



GL-4150



GL-4151

GL-4150	1955	Rad Support Assy V6	MSRP \$165.00 ea
GL-4151	1957	Rad Support Assy V8	MSRP \$165.00 ea
GL-4152	1957	Rad Support Upper Plate	MSRP \$80.00 ea

Rad Support



GL-4160



GL-4161

GL-4160	1955-56	Gas Tank	MSRP \$180.00 ea
GL-4161	1957	Gas Tank	MSRP \$180.00 ea

Gas Tank



GL-4310

Hand Brake Assy

GL-4310	1955-56	Hand Brake Assy	MSRP \$100.00 set
GL-4311	1957	Hand Brake Assy	MSRP \$100.00 set



GL-4152A	1957	Radiator Filler	MSRP \$18.00 ea
----------	------	-----------------	------------------------

Radiator Filler

Floor Seat Support



GL-4508, GL4509



GL-4510, GL-4511

GL-4508	1955-57	Rear Floor Seat Support RH- HT & Sedan	MSRP \$65.00 ea
GL-4509	1955-57	Rear Floor Seat Support LH- HT & Sedan	MSRP \$65.00 ea
GL-4510	1955-57	Rear Floor Seat Support RH- Convrt	MSRP \$65.00 ea
GL-4511	1955-57	Rear Floor Seat Support LH- Convrt	MSRP \$65.00 ea

Under Seat Beace



GL-4512	1955-57	Floor Panel Under Seat Brace RH	MSRP \$35.00 ea
GL-4513	1955-57	Floor Panel Under Seat Brace LH	MSRP \$35.00 ea

Reinforcement Plate



GL-4514, GL4515



GL-4516, GL4517

GL-4514	1955-57	Rear Floor Reinforcement Plate RH	MSRP \$49.00 ea
GL-4515	1955-57	Rear Floor Reinforcement Plate LH	MSRP \$49.00 ea
GL-4516	1955-57	Rear Floor Body Mount Reinforcement Plate RH	MSRP \$49.00 ea
GL-4517	1955-57	Rear Floor Body Mount Reinforcement Plate LH	MSRP \$49.00 ea

****Wholesale Only**** MSRP not including Taxes, Shipping and Handling. MSRP are subject to change without notice

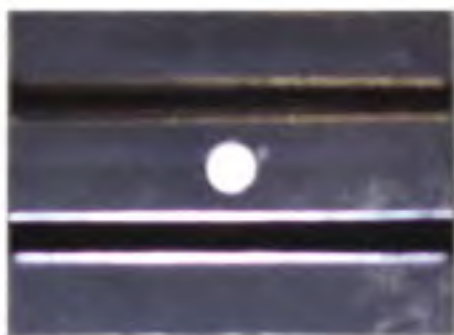


GL-4700

Sideview

GL-4700	1955-57	Quarter Inner Panel Complete LH Sedan	MSRP \$699.00 ea
GL-4701	1955-57	Quarter Inner Panel Complete RH Sedan	MSRP \$699.00 ea
GL-4701A	1955-57	Quarter Inner Panel Complete LH HT	MSRP \$699.00 ea
GL-4701B	1955-57	Quarter Inner Panel Complete RH HT	MSRP \$699.00 ea

****Wholesale Only**** MSRP not including Taxes, Shipping and Handling. MSRP are subject to change without notice



RH=LH

GL-4518	1955-57	Floor Pnanel Plare	MSRP \$25.00 ea
---------	---------	--------------------	-----------------

Floor Panel Plate



GL-4519	1955-57	Rocker Panel Inner RH	MSRP \$55.00 ea
GL-4520	1955-57	Rocker Panel Inner LH	MSRP \$55.00 ea

Rocker Inner

Trunk Floor



GL-4557



Rear View



including braces

GL-4557	1955-57	Trunk Floor Complete Smooth	MSRP \$850.00 ea
GL-4557A	1955-57	Trunk Floor Complete Smooth w/Spear Tire Holder	MSRP \$850.00 ea

Door Shell/Skin

GL-4571



GL-4579



GL-4571	1955-57	Door Shell RH HT	MSRP \$800.00 ea
GL-4572	1955-57	Door Shell LH HT	MSRP \$800.00 ea
GL-4573	1955-57	Door Shell RH Convrt	MSRP \$800.00 ea
GL-4574	1955-57	Door Shell LH Convrt	MSRP \$800.00 ea
GL-4575	1955-57	Door Shell RH Sedan	MSRP \$800.00 ea
GL-4576	1955-57	Door Shell LH Sedan	MSRP \$800.00 ea
GL-4577	1955-57	Door Skin Panel RH Convrt & HT	MSRP \$270.00 ea
GL-4578	1955-57	Door Skin Panel LH Convrt & HT	MSRP \$270.00 ea
GL-4579	1955-57	Door Skin Panel RH Sedan	MSRP \$270.00 ea
GL-4580	1955-57	Door Skin Panel LH Sedan	MSRP \$270.00 ea

Door Panel Trim

GL-4580A



GL-4580C



GL-4580A	1955-57	Rear Upper Inner Door Panel Trim RH Convrt Painted	MSRP \$55.00 ea
GL-4580B	1955-57	Rear Upper Inner Door Panel Trim LH Convrt Painted	MSRP \$55.00 ea
GL-4580C	1955-57	Rear Upper Inner Door Panel Trim RH Convrt Chrome	MSRP \$85.00 ea
GL-4580D	1955-57	Rear Upper Inner Door Panel Trim LH Convrt Chrome	MSRP \$85.00 ea

****Wholesale Only** MSRP not including Taxes, Shipping and Handling. MSRP are subject to change without notice**

Door Molding



GL-M4010

GL-M4010	1957	Door Molding RH	MSRP \$50.00 ea
GL-M4011	1957	Door Molding LH	MSRP \$50.00 ea

Windshield Molding



GL-M4002



GL-M4001



GL-M4004A

GL-M4001	1955-57	Top Windshield Molding Conv.	MSRP \$115.00 ea
GL-M4002	1955-57	Top Inside Windshield Molding Conv. pr	MSRP \$150.00 pr
GL-M4002A	1955-57	Top Windshield Lower Reveal Molding Conv. pr	MSRP \$226.00 pr
GL-M4003	1955-56	Bottom Windshield Molding	MSRP \$150.00 ea
GL-M4004	1957	Bottom Windshield Molding	MSRP \$150.00 ea
GL-M4004A	1955-57	Windshield Reveal Molding Clips Lower 5pcs/set	MSRP \$10.00 set

Dash Trim Molding



GL-M4000

GL-M4000	1957	Top Dash Trim Painted pr	MSRP \$155.00 pr
----------	------	--------------------------	------------------

Fender Molding



GL-M4020

GL-M4020	1957	Fender Molding RH	MSRP \$50.00 ea
GL-M4021	1957	Fender Molding LH	MSRP \$50.00 ea

Quarter Panel Molding



GL-M4031



GL-M4033

GL-M4030	1957	Quarter Moldinf Long LH	MSRP \$55.00 ea
GL-M4031	1957	Quarter Moldinf Long RH	MSRP \$55.00 ea
GL-M4032	1957	Quarter Moldinf Short LH	MSRP \$30.00 ea
GL-M4033	1957	Quarter Moldinf Short RH	MSRP \$30.00 ea
GL-M4034	1957	Quarter Moldinf Lower LH	MSRP \$110.00 ea
GL-M4035	1957	Quarter Moldinf Lower RH	MSRP \$110.00 ea

Pillar Molding



GL-M4005	1955-57	Inner Pillar Molding pr	MSRP \$69.00 pr
----------	---------	-------------------------	-----------------

Radiator Splash Shield



GL-4150A	1956-57	Radiator Splash Shield RH	MSRP \$75.00 ea
GL-4150B	1956-57	Radiator Splash Shield LH	MSRP \$75.00 ea

OE Style Full Quarter Panel



GL-4702	1957	Full Quarter Panel RH H/T	MSRP \$850.00 ea
GL-4703	1957	Full Quarter Panel LH H/T	MSRP \$850.00 ea
GL-4704	1955-57	Full Quarter Panel RH Conv't	MSRP \$899.00 ea
GL-4705	1955-57	Full Quarter Panel LH Conv't	MSRP \$899.00 ea

Roof Panel Brace



GL-4635	1955-57	Roof Panel Brace Kit H/T	MSRP \$399.00 ea
---------	---------	--------------------------	------------------

Firewall



GL-4630	1957	Firewall	MSRP \$465.00 ea
GL-4631	1955-56	Firewall	MSRP \$465.00 ea

****Wholesale Only**** MSRP not including Taxes, Shipping and Handling. MSRP are subject to change without notice

****Wholesale Only** MSRP not including Taxes, Shipping and Handling. MSRP are subject to change without notice**

Grille Brackets



GL-4110



GL-4112

GL-4110	1957	Grille Bar Support Bracket	MSRP \$30.00 ea
GL-4111	1957	Grille Upper Plate	MSRP \$80.00 ea
GL-4112	1955	Grille Support Bar	MSRP \$80.00 ea

Deck Filler Panel



GL-4210	1955-57	Deck Filler Inner Brace Conv.	MSRP \$200.00 set
---------	---------	-------------------------------	-------------------

Cowl Side Panel



GL-4400

GL-4401



GL-4403A

GL-4400	1955	Cowl Side Outer Panel LH	MSRP \$70.00 ea
GL-4401	1955	Cowl Side Outer Panel RH	MSRP \$70.00 ea
GL-4402	1957	Cowl Side Outer Panel LH	MSRP \$70.00 ea
GL-4403	1957	Cowl Side Outer Panel RH	MSRP \$70.00 ea
GL-4403A	1955-57	Cowl Side Drain Cutters pr	MSRP \$20.00 pr

Wheelhouse

GL-4710



GL-4714



GL-4710	1955	Outer Wheelhouse complete RH H/T	MSRP \$125.00 ea
GL-4711	1955	Outer Wheelhouse complete LH H/T	MSRP \$125.00 ea
GL-4712	1955-57	Outer Wheelhouse complete LH Conv.	MSRP \$125.00 ea
GL-4713	1955-57	Outer Wheelhouse complete RH Conv.	MSRP \$125.00 ea
GL-4714	1956-57	Outer Wheelhouse complete LH H/T	MSRP \$125.00 ea
GL-4715	1956-57	Outer Wheelhouse complete RH H/T	MSRP \$125.00 ea

Tail Panel Patch

GL-4801



GL-4800



GL-4800	1957	Tailpanel to Filler Patch RH	MSRP \$195.00 ea
GL-4801	1957	Tailpanel to Filler Patch LH	MSRP \$195.00 ea

Transmission Plate Cover



GL-4810	1955-57	Transmission Inspection Plate Cover	MSRP \$12.00 ea
---------	---------	-------------------------------------	-----------------

****Wholesale Only**** MSRP not including Taxes, Shipping and Handling. MSRP are subject to change without notice

****Wholesale Only** MSRP not including Taxes, Shipping and Handling. MSRP are subject to change without notice**

Convertible Top Frame



GL-4820



GL-4820A

GL-4820	1955-57	Convertible Top Header Bow Frame	MSRP \$399.00 ea
GL-4820A	1955-57	Convrt Top Pivot Bracket pr	MSRP \$189.00 pr

Seat Back Brace ,Retainer Pocket



GL-4220



GL-4225

GL-4220	1955-57	Rear Seat Back Brace Structure HT/Sedan	MSRP \$199.00 ea
GL-4225	1955-57	Rear Seat Retainer Pocket pr	MSRP \$14.00 pr

Interior Door Release



GL-M4050

GL-M4050	1955-57	Interior Door Release RH	MSRP \$25.00 ea
GL-M4050A	1955-57	Interior Door Release LH	MSRP \$25.00 ea

Trunk Latch Bracket



GL-4662A	1955-57	Trunk Latch Mounting Bracket	MSRP \$39.00 ea
----------	---------	------------------------------	------------------------

Door Jamb

GL-M4060



GL-M4061A



GL-M4060	1955-57	Door Jamb Panel RH Conv. & HT	MSRP \$200.00 ea
GL-M4060A	1955-57	Door Jamb Panel LH Conv. & HT	MSRP \$200.00 ea
GL-M4061	1955-57	Door Jamb Panel RH Sedan	MSRP \$200.00 ea
GL-M4061A	1955-57	Door Jamb Panel LH Sedan	MSRP \$200.00 ea



RetroSound

Modern Sound for Your Classic

CLASSIC CAR RADIO & ACCESSORIES

TRI-FIVE FULL SIZE



2010 RetroSound Catalog Version 1

ORDER LINE 1-866-640-1324

2010

FAX LINE 1-905-850-1722



RetroSound[®]
Modern Sound for your Classic

<http://www.retrosoundcanada.com>

INDEX

Index

RADIO SYSTEM

CLASSIC SOUND:.....	RSC-1
MODEL ONE:.....	RSC-2
RADIO SPECIFICATION:.....	RSC-3
FACEPLATE:.....	RSC-4
ACCESSORIES:	
KNOBS:.....	RSC-5
DASH HOLE CUPS:.....	RSC-5
REMOTE:.....	RSC-5
IR CABLE:.....	RSC-5

LOUDSPEAKERS

DESCRIPTION:.....	RSC-6
DVC SPEAKER:.....	RSC-7
SVC SPEAKER:.....	RSC-8



RetroSound[®]
Modern Sound for your Classic

<http://www.retrosoundcanada.com>

RADIO SYSTEM



Revolutionary patent - pending
INFINIMOUNT system allows for
infinite movement of bracket & shaft
knobs to meet virtually any install need!

Front and Rear Aux-in analog inputs
allow you to plug in any portable device
(Mp3 player, satellite unit, Portable CD)
The possibilities are endless!

CS-900

FEATURES:

- FRONT AUX INPUT, PLUG IN ANY MP3 PLAYER OR OTHER PORTABLE DEVICE, (CELL PHONE, ETC.)
- LCD DISPLAY W/ ENHANCED VIEWING ANGLE & DAYLIGHT COMPATIBLE W/ CLOCK FUNCTION
- AM/FM PLL TUNER WITH 30 PRESETS
- 2 PAIR RCA PRE AMP OUTPUTS TO ADD AN EXTERNAL AMPLIFIER
- PATENT PENDING INFINIMOUNT ADJUSTABLE SHAFT SYSTEM W/ REMOVABLE UNIVERSA BRACKET (INCLUDED)
- INSULATED BRACKET SYSTEM AND EXTERNAL SHAFT SYSTEM REDUCE ELECTRICAL NOISE INHERENT IN OLDER VEHICLES
- ADJUSTABLE FACEPLATE ANGLE, ALLOWS MOUNTING OF FACEPLATE DISPLAY TO VIRTUALLY ANY DASH
- SMALL 3.55"W x 6.57"D x 1.55"H INSTALLATION SIZE
- IR RECEIVER ON FACEPLATE (REMOTE OPTIONAL)

ORDER LINE 1-866-640-1324

2010

FAX LINE 1-905-850-1722

RSC - 1



RetroSound[®]
Modern Sound for your Classic

<http://www.retrosoundcanada.com>

RADIO SYSTEM

Rear - mounted USB input allows you to directly play Mp3 or WMA digital files off of any commonly available and inexpensive flash/thumb drive
No Ipod Needed!

USB **mp3**



MODEL ONE CHROME

Revolutionary patent - pending INFINIMOUNT system allows for infinite movement of bracket & shaft knobs to meet virtually any install need!

Front and Rear Aux-in analog inputs allow you to plug in any portable device (Mp3 player, satellite unit, Portable CD)
The possibilities are endless!



MODEL ONE BLACK

FEATURES:

- FRONT AUX INPUT, PLUG IN ANY MP3 PLAYER OR OTHER PORTABLE DEVICE, (CELL PHONE, ETC.)
- LCD DISPLAY W/ ENHANCED VIEWING ANGLE & DAYLIGHT COMPATIBLE W/ CLOCK FUNCTION
- AM/FM PLL TUNER WITH 30 PRESETS
- 2 PAIR RCA PRE AMP OUTPUTS TO ADD AN EXTERNAL AMPLIFIER
- PATENT PENDING INFINIMOUNT ADJUSTABLE SHAFT SYSTEM W/ REMOVABLE UNIVERSAL BRACKET (INCLUDED)
- INSULATED BRACKET SYSTEM AND EXTERNAL SHAFT SYSTEM REDUCE ELECTRICAL NOISE INHERENT IN OLDER VEHICLES
- ADJUSTABLE FACEPLATE ANGLE, ALLOWS MOUNTING OF FACEPLATE DISPLAY TO VIRTUALLY ANY DASH
- SMALL 3.55"W x 6.57"D x 1.55"H INSTALLATION SIZE
- IR RECEIVER ON FACEPLATE (REMOTE INCLUDED)
- LCD DISPLAY SHOWS MP3/WMA TRACK NAME
- REAR MOUNTED USB PORT, PLUG IN ANY USB FLASH DRIVE AND PLAY MP3/WMA FILES
- FULL FUNCTION 18 KEY IR REMOTE CONTROL

ORDER LINE 1-866-640-1324

2010

FAX LINE 1-905-850-1722

RSC - 2



RetroSound[®]
Modern Sound for your Classic

<http://www.retrosoundcanada.com>

RADIO SYSTEM



CLASSIC SOUND RADIO SYSTEM SPECIFICATIONS:

Tuner Section

FM

Tuning Range (Eu & US Tuning Capable)

87.5 - 107.9MHz

Antenna Terminal

External Antenna Connector

Usable Sensitivity

12.5 dBf

Selectivity

75dB @ 400kHz

Signal to Noise Ratio

62 dB (Stereo), 67 dB (Mono)

Harmonic Distortion @ 1 kHz

0.8% (Stereo), 0.5% (Monaural)

Separation

32 dB @ 1kHz

Frequency Response

30 - 16,000 Hz

AM (Eu & US Tuning Capable)

Tuning Range

530 - 1710 kHz

Antenna Terminal

External Antenna Connector

General

Dimensions (Main Body Only)

3.5"W x 6.7"D x 1.5"H

Power Requirements

10.5 - 14.4V

Current Consumption

Max. 10A

Current Consumption

< 3.5 mA

Output Power

22 x 4w RMS 60x4 Max Power

(@ 14.4V @ 4 ohm @ 1% THD)

Output Impedance

4 - 8 ohm

Low Level Output (4 Channels)

2.5V

AUX Input (Rear)

2V / 6 kΩ

AUX Input (Front)

500 mV / 6 kΩ

ORDER LINE 1-866-640-1324

2010

FAX LINE 1-905-850-1722

RSFS - 3



RetroSound[®]
Modern Sound for your Classic

<http://www.retrosoundcanada.com>

RADIO FACEPLATE

TRI-FIVE FULL SIZE



RS-556CHVYKT



RS-56CHVYKTHB



RS-57CHVYKT



RS-UNIVFP

SKU#	YEAR	VEHICLE
RS-556CHVYKT	1955	150 / 210 / BEL AIR
RS-556CHVYKT	1956	CHEVY CAR (ALL MODEL)
RS-56CHVYKTHB	1956	BEL AIR
RS-57CHVYKT	1957	CHEVY CAR
RS-UNIVFP	(UNIVERSAL)	TRI-FIVE FULL SIZE

ORDER LINE 1-866-640-1324

2010

FAX LINE 1-905-850-1722



RetroSound[®]
Modern Sound for your Classic

<http://www.retrosoundcanada.com>

ACCESSORIES

KNOBS



6885ACR



6885ABK



6885FBCRB



6885FBCRB2



6885FCRBKR



EUROKNBACR



EUROKNBABK



EUROKNBFCRBKR



EUROKNBFBKCR



DOKNOBKIT



556KNOBKIT



57KNOBKIT

94" REMOTE IR CABLE



DASH HOLE CUPS



57 CHVY CUPS



68 - 67 NOVA CUPS

REMOTE CONTROL



ORDER LINE 1-866-640-1324

2010

FAX LINE 1-905-850-1722

RSFS - 5



RetroSound[®]
Modern Sound for your Classic

<http://www.retrosoundcanada.com>

LOUDSPEAKERS

RetroSound Loudspeakers

Why purchase RetroSound™ speakers over your original or "other" commercially available speakers for your classic car? Check out the exploded view below to learn more about the detail and quality that goes into each speaker we make!



RetroSound replacement speakers have set the industry standard in OEM for your classic vehicle!

Designed and tooled from the ground up, the speakers meet the demand of today's high performance amplifiers while maintaining factory dimensions for original location mounting and are compatible with all digital music sources. The "N" Series features 4 models that feature ultra thin 1.77" mounting profiles for fit in virtually any installation application. These 4 models with neodymium magnet structures which are 5 times more powerful than standard speaker magnets, allowing for a substantial reduction in mounting depth and feature enhanced power handling and heat dissipation characteristics. Their Dual Voice Coil design (on 3 models) allows you to connect 2 stereo channels from your radio to one speaker, providing you with maximum sound for a single speaker application!

ORDER LINE 1-866-640-1324

2010

FAX LINE 1-905-850-1722

RSFS - 6



RetroSound[®]
Modern Sound for your Classic

<http://www.retrosoundcanada.com>

LOUDSPEAKERS

RetroSound DVC Speaker Technical Specification



ORDER LINE 1-866-640-1324

2010

FAX LINE 1-905-850-1722

RSFS - 7



RetroSound[®]
Modern Sound for your Classic

<http://www.retrosoundcanada.com>

LOUDSPEAKERS

RetroSound SVC Speaker Technical Specification



ORDER LINE 1-866-640-1324

2010

FAX LINE 1-905-850-1722

RSFS - 8